

Magnets in Cases



WWW.GRISK.COM

- ◆ Dimensions given apply to the case size
- ◆ Magnets available in bags of 100
- ◆ White, brown or gray

M-5RS
3/8" x 5/8"
stubby, recessed



MM-9RS
3/8" x 5/8"
stubby, recessed



M-5
3/8" Dia.
press fit, recessed



M-5F
3/8" Dia.
flanged, recessed



M-6RF
1/4" press-fit, recessed



M-180
3/4" Dia.
Steel door, recessed



M-180WG
3/4" Dia.
Steel door, recessed



M-184
1" Dia.
Steel door,
recessed



M-184WG
1" Dia.
Steel door,
recessed



M-500
1/4" x 1/4" x 7/8"
macro surface mount



M-505
3/16" x 1/4" x 1"
super mini, surface mount



M-7
1/4" Sq. x 1"
adhesive back,
surface mount



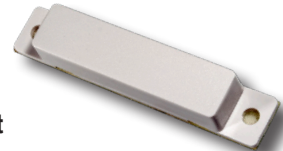
M-7F
1/4" x 1/4" x 1"
surface mount, adhesive
back w/breakaway flange



**M-110,
MM-910**
1/4" x 3/8 x 1 1/2"
mini adhesive, surface mount



**M-100,
MM-900**
1/4" x 3/8" x 2"
mini screw mount



GEORGE RISK INDUSTRIES, INC.
G.R.I. PLAZA
KIMBALL, NE 69145
WWW.GRISK.COM



Made in U.S.A.

C_AC 7 Magnets in Cases

TOLL-FREE 1-800-445-5218
TOLL-FREE 1-800-523-1227
(308) 235-4645
FAX (308) 235-3561
E-MAIL: sales@grisk.com

Magnets in Cases



WWW.GRISK.COM

CMF-875
.22 x .46" x .96"



M-1100
3/8" x 3/8" x 2"
screw mount, surface mount



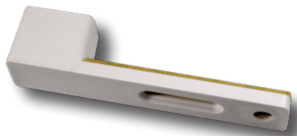
M-8, M-14
1/2" x 1/2" x 2 1/2"
screw mount, surface mount



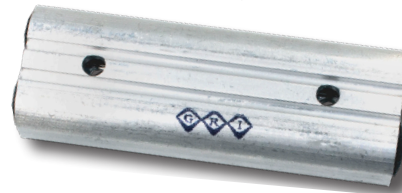
M-15, M-20, M-401, M-402
1/2" x 1/2" x 4"
screw mount, surface mount



M-SASH
Base: 2.56" L x .450" W x .125" D
Case: .510" L x .450" W x .595" D



M-250 **M-280**
3 2/4" x 1 1/8" 3 2/4" x 1 1/8"
extruded case, wall mount



M4532
3.10" x 2.14
industrial aluminum
housing



M-4400
2 1/2" x 7/8" x 1/2"
industrial rugged
aluminum case



Also Available:

M-150

MM-150RS

M-129

M-4460

M-4612

M-4704

GEORGE RISK INDUSTRIES, INC.
G.R.I. PLAZA
KIMBALL, NE 69145
WWW.GRISK.COM



Made in U.S.A.

TOLL-FREE 1-800-445-5218
TOLL-FREE 1-800-523-1227
(308) 235-4645
FAX (308) 235-3561
E-MAIL: sales@grisk.com